



ELECTRIC
F. E. I.

PRODUCT CATALOG

Metallic & Non-Metallic Outlet Boxes,
Fiberglass Outlet Boxes, Extra-Duty Bubble
Covers, Wiring Devices, Building Wire &
Structured Cable, and Multifamily Lighting

A complete line of electrical
products designed & manufactured
by professionals





FIBERGLASS OUTLET BOXES



ITEM NO. LIC-F1G

1-Gang Nail on Fiberglass Outlet Box



Scan for Specifications



ITEM NO. LIC-F1G

1-Gang Nail on Fiberglass Outlet Box

Product Description:

1-Gang Nail on Fiberglass Outlet Box.

Application:

Mounts to wooden stud in new work residential applications.

Features:

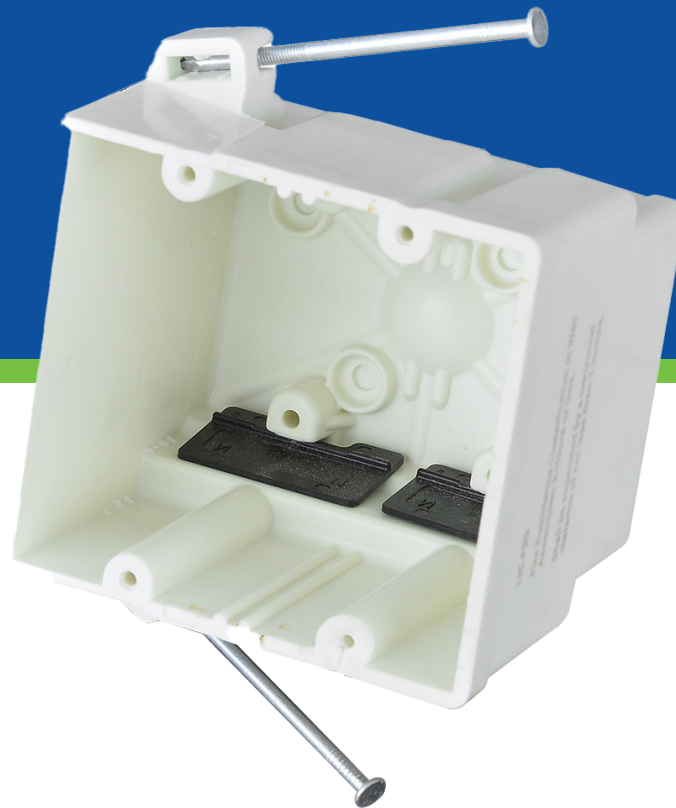
- Knockouts on fiberglass boxes are complete, reducing drafts and easily removed with wire for no tools installation.
- Device holes are pre-tapped and tapered.
- Features factory-installed Speed Klamps.
- High Strength Fiberglass Reinforced Polyester Material.
- Non-distorting in high heat, impact-resistant in cold temps.
- Machine tapped device holes for faster installation.

Certifications:

- ETL Listed

Item No.	LIC-F1G
Cubic Capacity:	22.5 CU. IN.
Height:	3.88 inches
Width:	2.37 inches
Depth:	3.60 inches

- Fire Resistance Classification in Wall Assemblies 2-Hours or less.
 - Shall be separated by a horizontal distance of not less than 3 inches.
- Fire Resistance Classification in Floor-Ceiling Assemblies 2-Hours or Less.
 - Distance between boxes in adjacent cavities may be reduced to 5-1/2 inches.

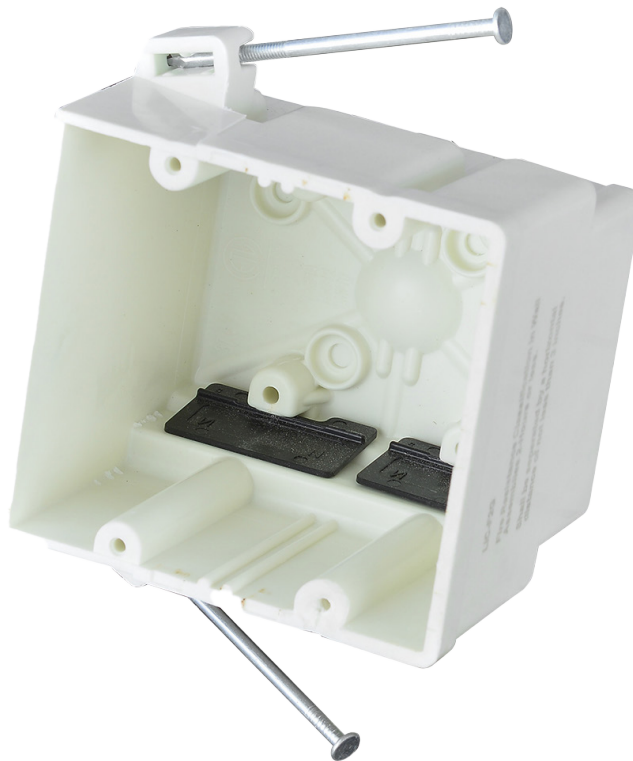


ITEM NO. LIC-F2G

2-Gang Nail on Fiberglass Outlet Box



Scan for Specifications



ITEM NO. LIC-F2G

2-Gang Nail on Fiberglass Outlet Box

Product Description:

2-Gang Nail on Fiberglass Outlet box.

Application:

Mounts to wooden stud in new work residential applications.

Features:

- Knockouts on fiberglass boxes are complete, reducing drafts and easily removed with wire for no tools installation.
- Device holes are pre-tapped and tapered.
- Features factory-installed Speed Klamps.
- High Strength Fiberglass Reinforced Polyester Material.
- Non-distorting in high heat, impact-resistant in cold temperatures.
- Machine tapped device holes for faster installation.

Item No.	LIC-F2G
Cubic Capacity:	22.5 CU. IN.
Height:	4.84 inches
Width:	4.11 inches
Depth:	3.47 inches

- Fire Resistance Classification in Wall Assemblies 2-Hours or less.
 - Shall be separated by a horizontal distance of not less than 3 inches.

Certifications:

- ETL Listed



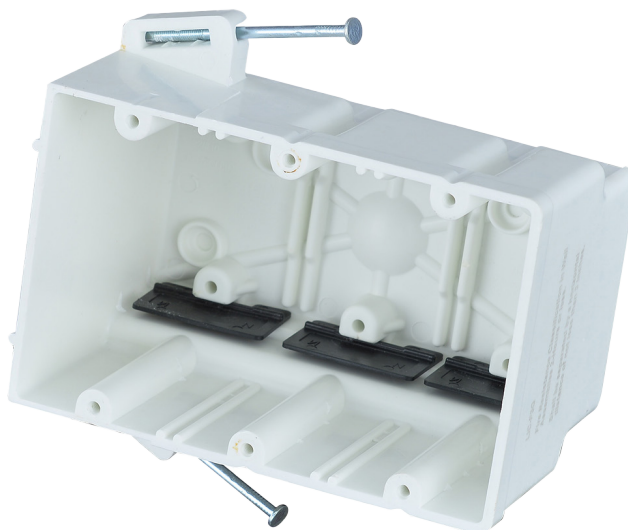


ITEM NO. LIC-F3G

3-Gang Nail on Fiberglass Outlet Box



Scan for Specifications



ITEM NO. LIC-F3G

3-Gang Nail on Fiberglass Outlet Box

Product Description:

3-Gang Nail on Fiberglass Outlet Box.

Application:

Mounts to wooden stud in new work residential applications.

Features:

- Knockouts on fiberglass boxes are complete, reducing drafts and easily removed with wire for no tools installation.
- Device holes are pre-tapped and tapered.
- Features factory-installed Speed Klamps.
- High Strength Fiberglass Reinforced Polyester Material.
- Non-distorting in high heat, impact-resistant in cold temps.
- Machine tapped device holes for faster installation.

Certifications:

- ETL Listed

Item No.	LIC-F3G
Cubic Capacity:	22.5 CU. IN.
Height:	5.19 inches
Width:	5.08 inches
Depth:	3.60 inches

- Fire Resistance Classification in Wall Assemblies 2-Hours or less.
 - Shall be separated by a horizontal distance of not less than 3 inches.



ITEM NO. LIC-F4/0

4/0 Nail on Fiberglass Outlet Box



Scan for Specifications



ITEM NO. LIC-F4/0

4/0 Nail on Fiberglass Outlet Box

Product Description:

4/0 Nail on Fiberglass Outlet Box

Application:

Mounts to wooden stud for fixture support up to 50 lbs.

Features:

- Knockouts on fiberglass boxes are complete, reducing drafts and easily removed with wire for no tools installation.
- Device holes are pre-tapped and tapered.
- Features factory-installed Speed Klamps.
- High Strength Fiberglass Reinforced Polyester Material.
- Non-distorting in high heat, impact-resistant in cold temps.
- Machine tapped device holes for faster installation.

Certifications:

- ETL Listed

Item No.	LIC-F4/0
Cubic Capacity:	22.5 CU. IN.
Height:	5.56 inches
Width:	4.10 inches
Depth:	2.40 inches

- Fire Resistance Classification in Wall Assemblies 2-Hours or less.
 - Shall be separated by a horizontal distance of not less than 3 inches.
- Fire Resistance Classification in Floor-Ceiling Assemblies 2-Hours or Less.
 - Distance between boxes in adjacent cavities may be reduced to 5-1/2 inches.



ITEM NO. LIC-FB4/0

4/0 Nail on Fiberglass Outlet Box w/ 24" Max Bar



Scan for Specifications



ITEM NO. LIC-FB4/0

4/0 Nail on Fiberglass Outlet Box w/ 24" Max Bar

Product Description:

4/0 Nail on Fiberglass Outlet Box w/ 24" Max Bar

Application:

Mounts to wooden stud for fixture support up to 50 lbs.

Features:

- Knockouts on fiberglass boxes are complete, reducing drafts and easily removed with wire for no tools installation.
- Device holes are pre-tapped and tapered.
- Features factory-installed Speed Klamps.
- High Strength Fiberglass Reinforced Polyester Material.
- Non-distorting in high heat, impact-resistant in cold temperatures.
- Machine tapped device holes for faster installation.

Item No.	LIC-FB4/0
Cubic Capacity:	22.5 CU. IN.
Height:	4.10 inches
Width:	4.10 inches
Depth:	2.40 inches

- Fire Resistance Classification in Wall Assemblies 2-Hours or less.
 - Shall be separated by a horizontal distance of not less than 3 inches.
- Fire Resistance Classification in Floor-Ceiling Assemblies 2-Hours or Less.
 - Distance between boxes in adjacent cavities may be reduced to 5-1/2 inches.

Certifications:

- ETL Listed



Packaging & Shipping Information

Item #	Carton (L) in.	Carton (W) in.	Carton (H) in.	Quantity per Carton (PCS)	Quantity of Cartons per 40HQ	Quantity per 40HQ (PCS)
LIC-F1G	18.90	12.60	10.24	60	1650	99000
LIC-F2G	21.06	16.54	14.57	60	810	48600
LIC-F3G	18.11	11.02	18.70	30	1100	33000
LIC-F4/0	21.26	13.39	12.60	60	1150	69000
LIC-FB4/0	22.05	14.96	12.20	50	790	39500



Scan For Product Showcase

- ✉ INFO.FEIELEC@AOL.COM
- 🌐 WWW.FEI-ELECTRIC.COM
- 📱 1-866-FEI-ELEC (334-3532)