

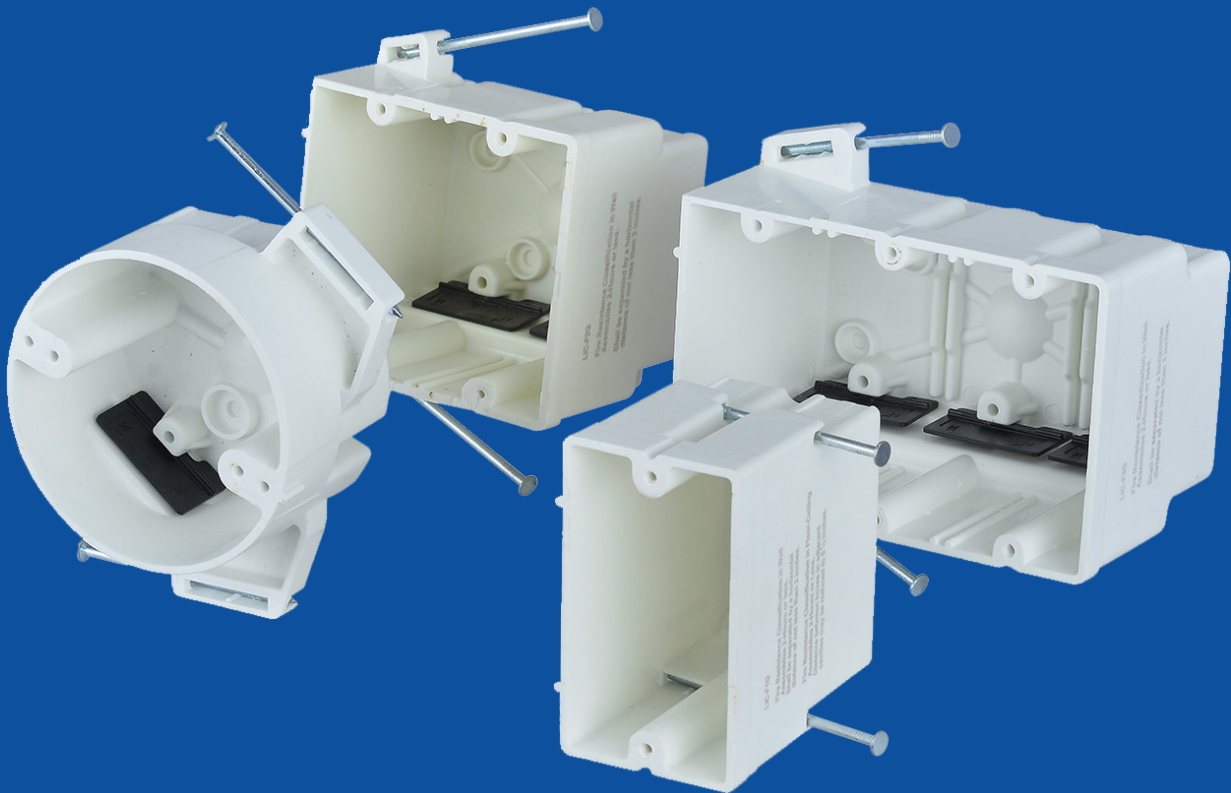


# PRODUCT CATALOG

Metallic & Non-Metallic Outlet Boxes,  
Fiberglass Outlet Boxes, Extra-Duty Bubble  
Covers, Wiring Devices, Building Wire &  
Structured Cable, and Lighting

A complete line of electrical  
products designed & manufactured  
by professionals





## FIBERGLASS OUTLET BOXES



## ITEM NO: LIC-F1G

Fiberglass Outlet Box



## ITEM NO: LIC-F1G

Fiberglass Outlet Box

### Product Description:

1 Gang Nail on Fiberglass Outlet Box.

### Application:

Mounts to wooden stud in new work residential applications.

### Features:

- Knockouts on fiberglass boxes are complete, reducing drafts and easily removed with wire for no tools installation.
- Device holes are pre-tapped and tapered.
- Feature factory installed Speed Klamps.
- High Strength Fiberglass Reinforced Polyester Material.
- Non-distorting in high heat, impact resistant in cold temps.
- Machine tapped device holes for faster installation.

### Certifications:

- ETL Listed

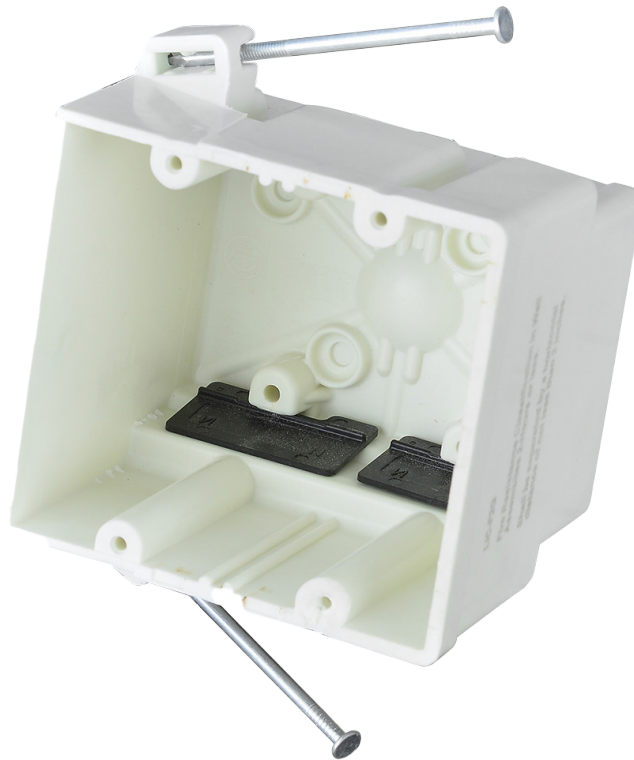
Item Code:	LIC-F1G
Cubic Capacity:	22.5 cu. in.
Type of Installation:	New Work

- Fire Resistance Classification in Wall Assemblies 2-Hours or less.
- Shall be separated by a horizontal distance of not less than 3 inches.
- Fire Resistance Classification in Floor-Ceiling Assemblies 2-Hours or Less.
- Distance between boxes in adjacent cavities may be reduced to 5-1/2 inches.



**ITEM NO: LIC-F2G**

Fiberglass Outlet Box



## ITEM NO: LIC-F2G

Fiberglass Outlet Box

### Product Description:

2 Gang Nail on Fiberglass Outlet box.

### Application:

Mounts to wooden stud in new work residential applications.

### Features:

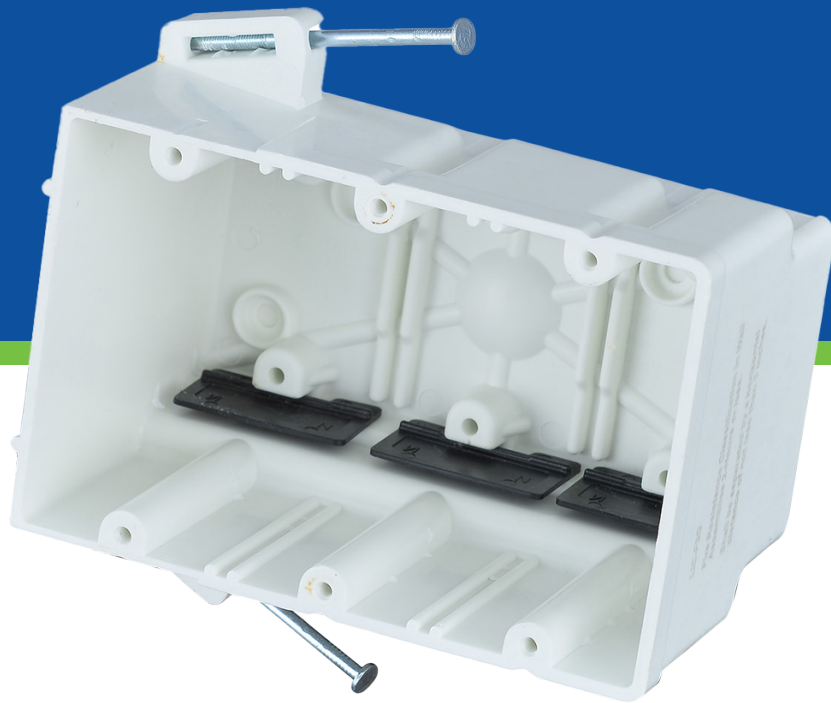
- Knockouts on fiberglass boxes are complete, reducing drafts and easily removed with wire for no tools installation.
- Device holes are pre-tapped and tapered.
- Feature factory installed Speed Klamps.
- High Strength Fiberglass Reinforced Polyester Material.
- Non-distorting in high heat, impact resistant in cold temps.
- Machine tapped device holes for faster installation.

### Certifications:

- ETL Listed

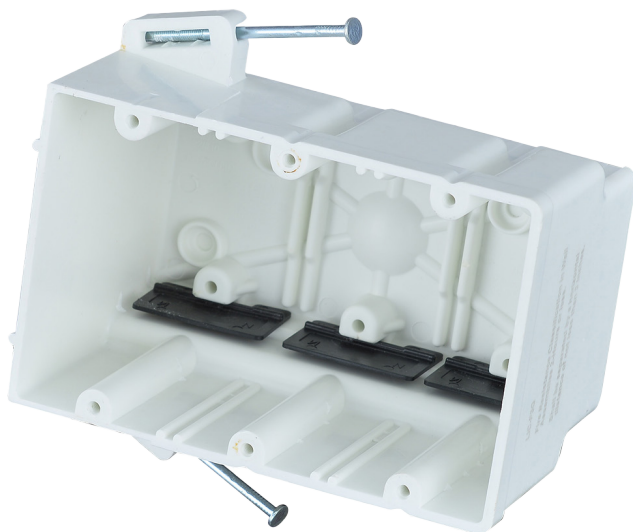
Item Code:	LIC-F2G
Cubic Capacity:	22.5 cu. in.
Type of Installation:	New Work

- Fire Resistance Classification in Wall Assemblies 2-Hours or less.
- Shall be separated by a horizontal distance of not less than 3 inches.



## ITEM NO: LIC-F3G

Fiberglass Outlet Box



## ITEM NO: LIC-F3G

Fiberglass Outlet Box

### Product Description:

3 Gang Nail on Fiberglass Outlet Box.

### Application:

Mounts to wooden stud in new work residential applications.

### Features:

- Knockouts on fiberglass boxes are complete, reducing drafts and easily removed with wire for no tools installation.
- Device holes are pre-tapped and tapered.
- Feature factory installed Speed Klamps.
- High Strength Fiberglass Reinforced Polyester Material.
- Non-distorting in high heat, impact resistant in cold temps.
- Machine tapped device holes for faster installation.

### Certifications:

- ETL Listed

Item Code:	LIC-F3G
Cubic Capacity:	22.5 cu. in.
Type of Installation:	New Work

- Fire Resistance Classification in Wall Assemblies 2-Hours or less.
- Shall be separated by a horizontal distance of not less than 3 inches.





**ITEM NO: LIC-F40**

Fiberglass Outlet Box



## ITEM NO: LIC-F40

Fiberglass Outlet Box

### Product Description:

4/0 Nail on Fiberglass Outlet Box

### Application:

Mounts to wooden stud for fixture support up to 50 lbs.

### Features:

- Knockouts on fiberglass boxes are complete, reducing drafts and easily removed with wire for no tools installation.
- Device holes are pre-tapped and tapered.
- Feature factory installed Speed Klamps.
- High Strength Fiberglass Reinforced Polyester Material.
- Non-distorting in high heat, impact resistant in cold temps.
- Machine tapped device holes for faster installation.

### Certifications:

- ETL Listed

Item Code:	LIC-F40
Cubic Capacity:	22.5 cu. in.
Type of Installation:	New Work

- Fire Resistance Classification in Wall Assemblies 2-Hours or less.
- Shall be separated by a horizontal distance of not less than 3 inches.
- Fire Resistance Classification in Floor-Ceiling Assemblies 2-Hours or Less.
- Distance between boxes in adjacent cavities may be reduced to 5-1/2 inches.



✉ [INFO.FEIELEC@AOL.COM](mailto:INFO.FEIELEC@AOL.COM)  
🌐 [WWW.FEI-ELECTRIC.COM](http://WWW.FEI-ELECTRIC.COM)  
📱 1-866-FEI-ELEC (334-3532)